

Digital Infrastructure for Nordic Research Excellence



- Since 2012 as part of  NordForsk
- Professional project steering methods (Tieto PPS)
- Annual open calls for collaboration projects
- 2020-2025 NeIC strategy
- 2019 Budget: 8M€
- 2020: Estonia becomes a full member

“Together the Nordic countries are **tackling e-infra challenges** beyond individual national capabilities”

Some projects and their partners:

Nordic Tier-1 (aka NDGF)

Tryggve (2)

CodeRefinery (2)

iOBS

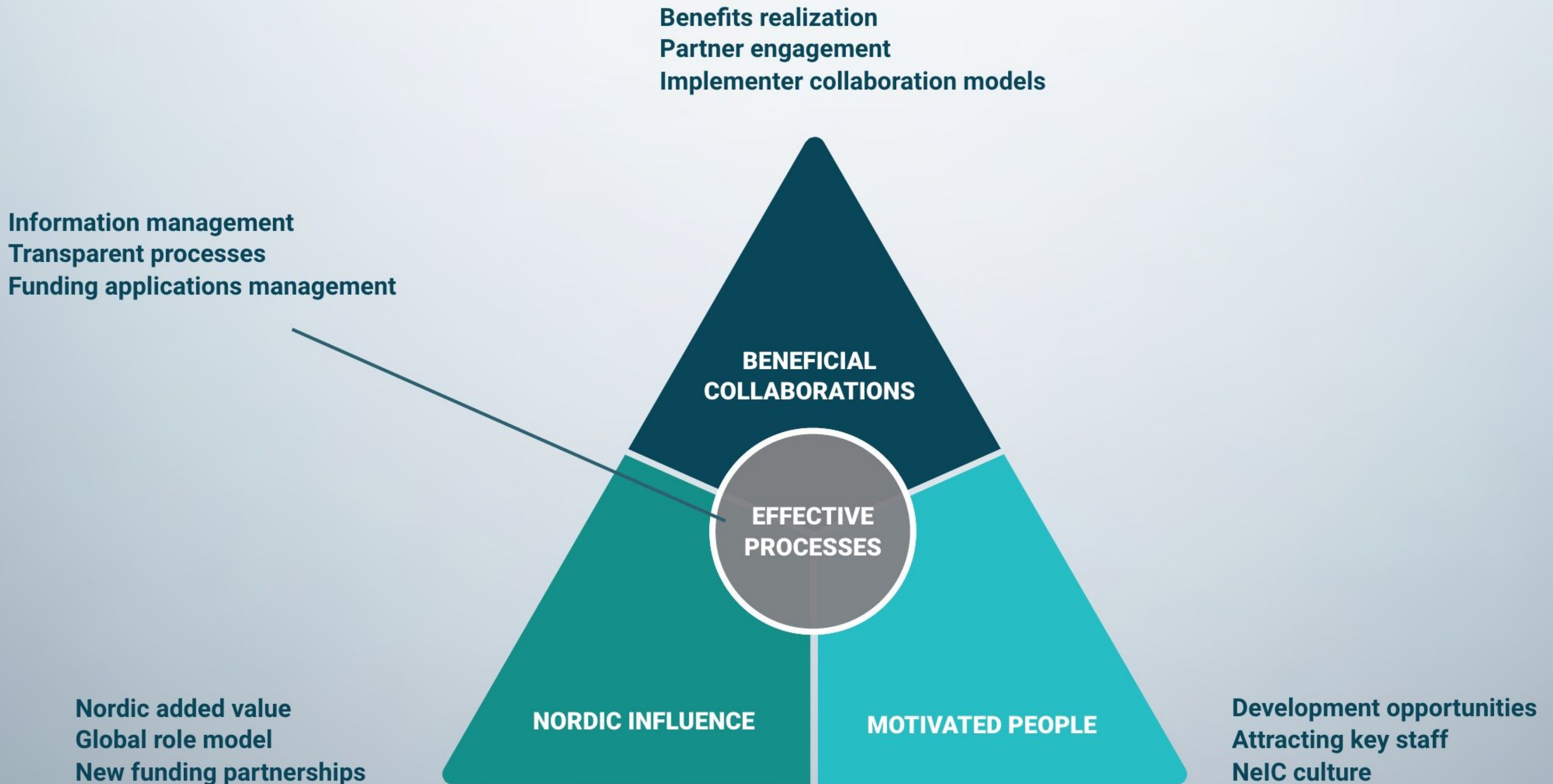
EISCAT 3D (Data) Support



NEIC STRATEGY 2020-2025

NeIC is a global role model for cross-border distributed and sustainable e-infrastructure collaborations

DIGITAL INFRASTRUCTURE FOR NORDIC RESEARCH EXCELLENCE



NelC core values

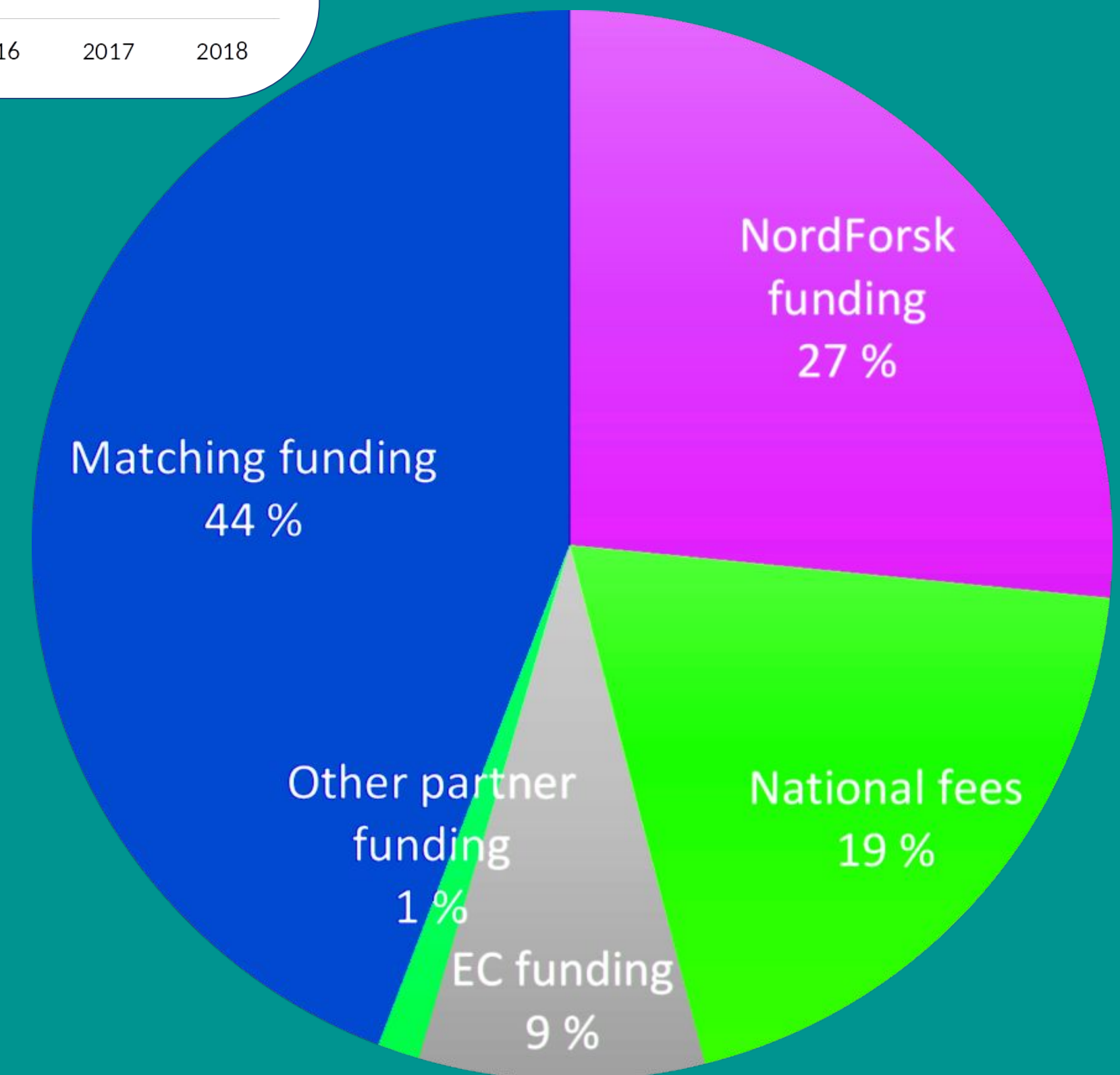
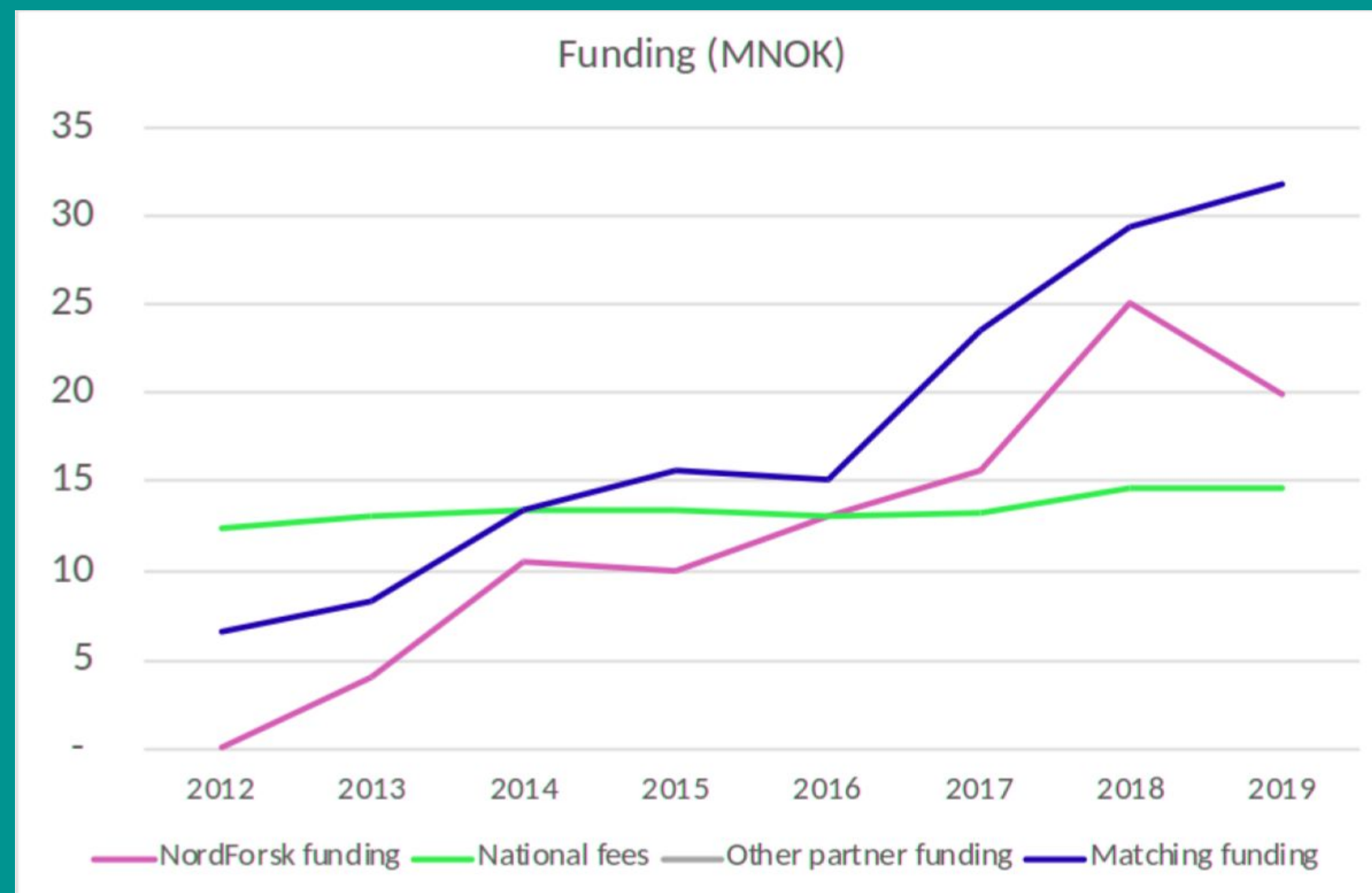
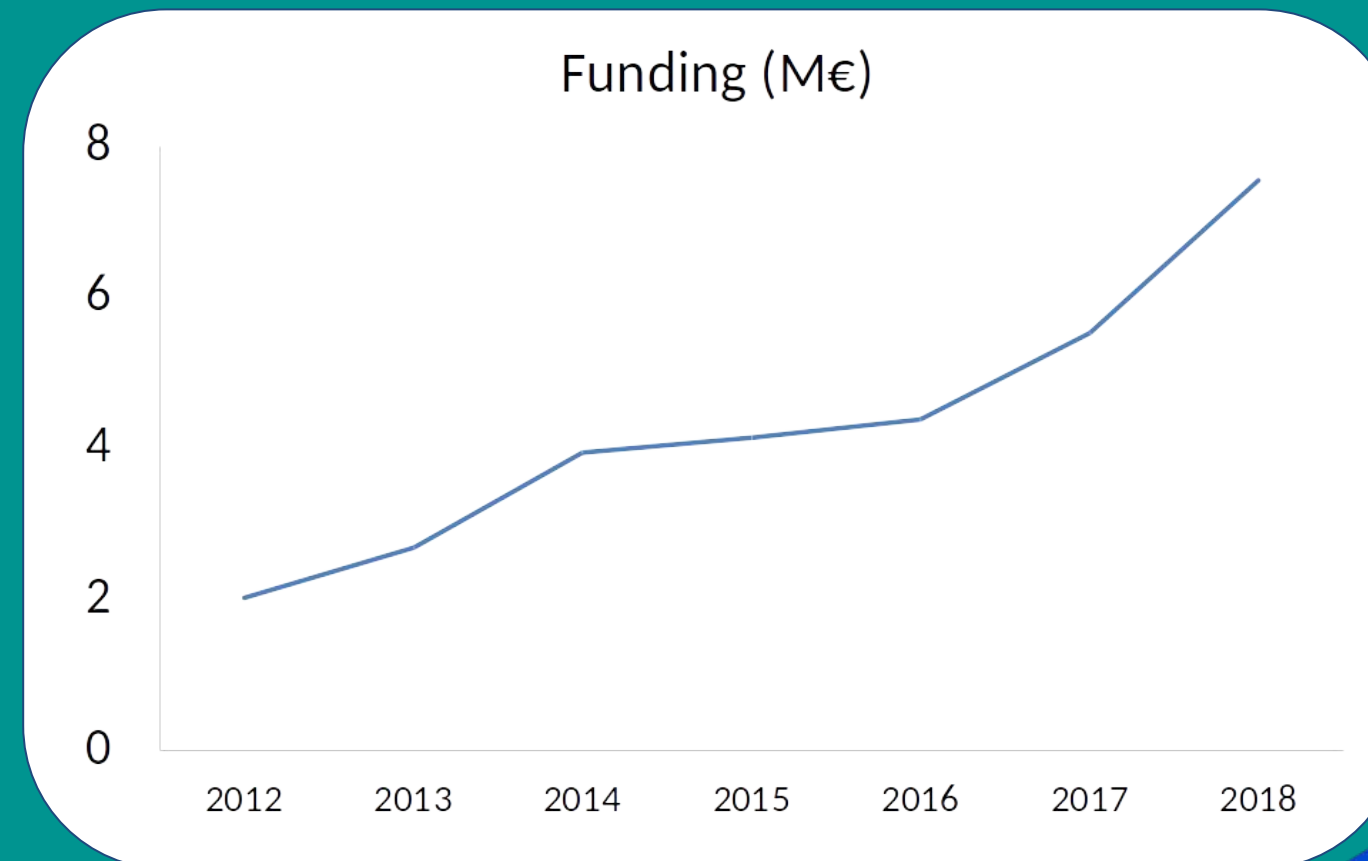
The core values governing all of NelC's activities are:

- NelC services and development are motivated by providing **added value to Nordic research**.
- NelC **shares knowledge and develops competence** on advanced e-infrastructure solutions.
- NelC works in **open and transparent ways** to be a **trustworthy partner**.
- NelC **strives to improve continuously** in what we do.

NeIC Funding

2019 Budget: 8 M€

- **NordForsk**: collaboration agreement
- **Members**: Joint funding proposals (MoU until 2023)
- **Co-funding** (not restricted to 50%; 'finding sweet spot of collaboration')
- **European** funding: EOSC-Nordic



2019: 8 M€ (including co-funding)

Practical Project Steering (PPS)

PPS shows what is to be done, how it should be done and who is responsible for what.

Some key roles and what they mean:

Project Owner: Sits in the NeIC Executive Team. Initiates and secures financing of a project. Throughout the project the Project Owner works with the Project Manager to ensure that the project achieves good results and gives support in order to ensure that the project is able to produce the planned outcomes.

Steering Group: Often the Steering Group is made up of one person from each of the partners. The Steering Group is a decision making body which makes decisions related to the project's objective to achieve the envisaged outcomes.

Project Manager: The project management ultimately leads the project work towards agreed deliveries and successful completion.

Staff: Produces the results

The PPS model for project steering describes the three phases of a project; preparation, execution and conclusion. The phases are supplemented by Decision Points at which the steering group makes decisions.

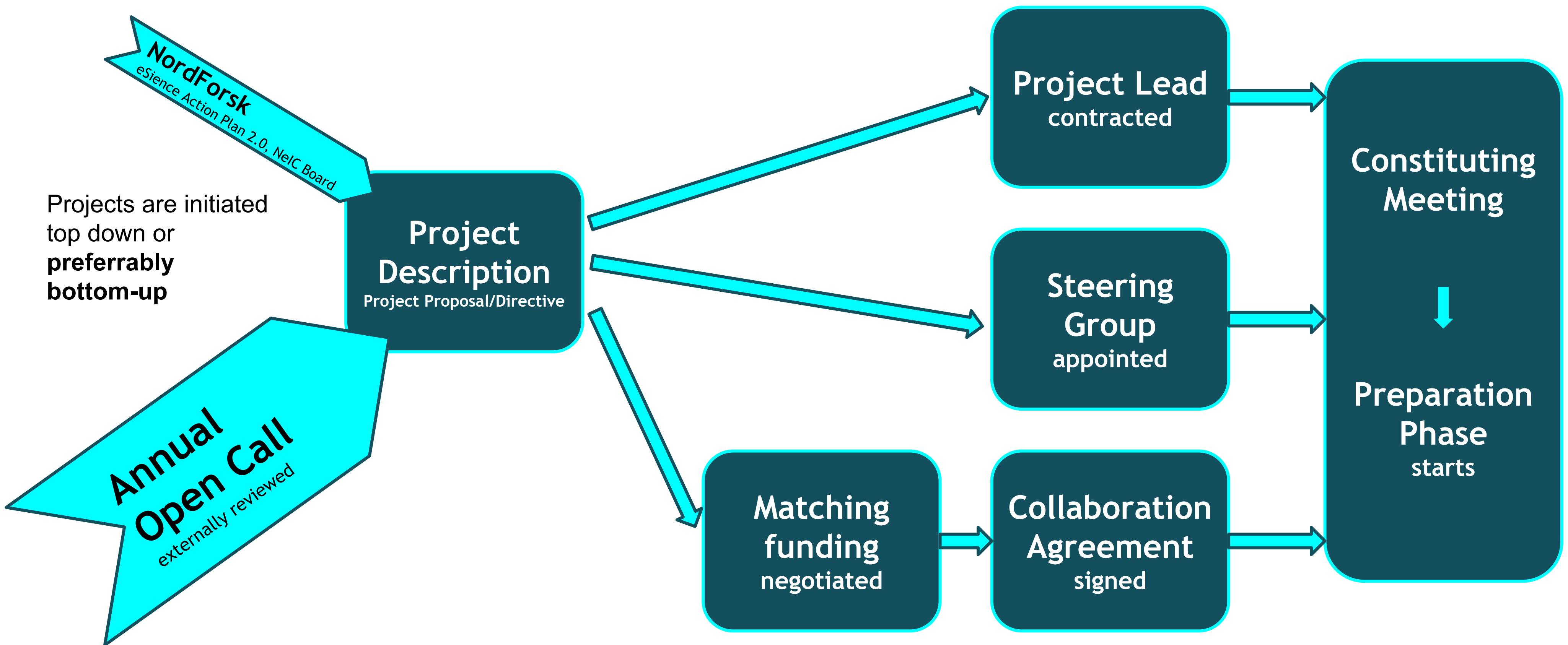
Practical Project Steering (PPS)



Phases of the Project Life Cycle

Starting a project: Evaluation phase close-up

Evaluation phase is characterized by **discussions**, Project Directive development and **identification of benefits**



Practical Project Steering (PPS)

